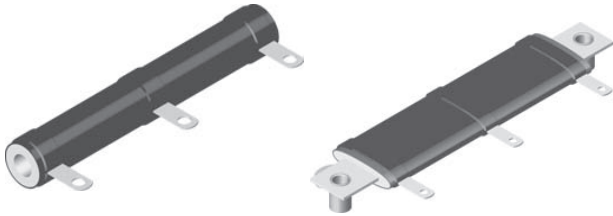


Wirewound Resistors, Industrial Power, Tapped Tubular



FEATURES

- Fixed taps for voltage dividers
- High temperature silicon coating
- Complete welded construction
- Excellent stability in operation
- Can be used as multi-tap resistor

STANDARD ELECTRICAL SPECIFICATIONS

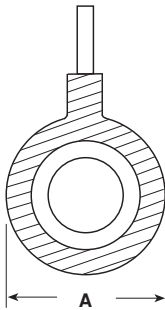
MODEL	POWER RATING $P_{25^{\circ}\text{C}}$ W	RESISTANCE RANGE TOTAL RESISTANCE WITH ONE TAP Ω $\pm 10\%$	WEIGHT (Typical) g
HLT-15	15	0.1 - 18k	8.64
HLT-20	20	0.1 - 31k	12.57
HLT-25	25	0.1 - 34k	20.72
HLT-26	26	0.1 - 59k	15.34
HLT-50	50	0.1 - 104k	42.08
HLT-51	51	0.1 - 112k	51.96
HLT-55	55	0.1 - 49k	60.48
HLT-60	60	0.1 - 136k	65.64
HLT-65	65	0.1 - 159k	64.82
HLT-70	70	0.1 - 72k	60.48
HLT-80	80	0.1 - 164k	121.58
HLT-95	95	0.1 - 96k	76.51
HLT-100	100	0.1 - 253k	91.37
HLT-120	120	0.1 - 305k	183.82
HLT-130	130	0.1 - 358k	192.36
HLT-160	160	0.1 - 446k	245.86
HLT-175	175	0.1 - 481k	250.80
HLT-225	225	0.1 - 622k	309.97

TECHNICAL SPECIFICATIONS

PARAMETER	UNIT	HLT RESISTOR CHARACTERISTICS
Temperature Coefficient	ppm/ $^{\circ}\text{C}$	± 90 for 0.1 Ω to 0.99 Ω , ± 50 for 1 Ω to 9.9 Ω , ± 30 for 10 Ω and above.
Dielectric Withstanding Voltage	V_{AC}	1000, from terminal to mounting hardware
Short Time Overload	-	10 x rated power for 5 seconds
Maximum Working Voltage	V	$(P \times R)^{1/2}$
Insulation Resistance	Ω	1000 Megohm minimum dry, 100 Megohm minimum after moisture test
Operating Temperature Range	$^{\circ}\text{C}$	- 55 / + 350

ORDERING INFORMATION

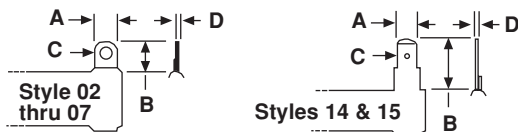
HLT-120	07	Z	150 Ω	10%
MODEL	TERMINAL	TERMINAL FINISH	RESISTANCE Ω	TOLERANCE $\pm \%$

DIMENSIONS


(Includes Coating and Terminal Band)

*HLT-55, HLT-70 & HLT-95 are HL Flat style, see HL Flat data sheet for detail dimensions

MODEL	DIMENSIONS in inches [millimeters]								
	A (Max)	CORE DIMENSIONS			TERMINAL SETBACK ± 0.31 [± 0.79]	DISTANCE BETWEEN TERMINALS (REF)	TERMINAL DESIGNATION		MOUNTING HARDWARE OPTIONS
		LENGTH ± 0.062 [± 1.59]	O.D.	I.D. ± 0.031 [± 0.79]			STANDARD	OPTIONAL	
HLT-15	0.563 [14.29]	1.500 [38.10]	0.438 [11.11]	0.313 [7.94]	0.094 [2.38]	0.937 [23.80]	02Z	14N	101, 203, 301
HLT-20	0.563 [14.29]	2.000 [50.80]	0.438 [11.11]	0.313 [7.94]	0.094 [2.38]	1.437 [36.50]	02Z	14N	101, 203, 301
HLT-25	0.688 [17.46]	2.000 [50.80]	0.563 [14.29]	0.313 [7.94]	0.094 [2.38]	1.312 [33.32]	06Z	15N	101, 203, 301
HLT-26	0.563 [14.29]	3.000 [76.20]	0.438 [11.11]	0.313 [7.94]	0.094 [2.38]	2.437 [61.90]	02Z	14N	101, 203, 301
HLT-50	0.688 [17.46]	4.000 [101.60]	0.563 [14.29]	0.313 [7.94]	0.094 [2.38]	3.312 [84.12]	06Z	15N	101, 203, 301
HLT-51	0.906 [23.02]	3.500 [88.90]	0.750 [19.05]	0.500 [12.70]	0.125 [3.18]	2.75 [69.85]	06Z	15N	102, 206, 303
HLT-55	*	3.500 [88.90]	*	*	*	2.968 [75.39]	09Z	16N	*
HLT-60	0.906 [23.02]	4.000 [101.60]	0.750 [19.05]	0.500 [12.70]	0.125 [3.18]	3.250 [82.55]	06Z	15N	102, 206, 303
HLT-65	0.906 [23.02]	4.500 [114.30]	0.750 [19.05]	0.500 [12.70]	0.125 [3.18]	3.750 [95.25]	06Z	15N	102, 206, 303
HLT-70	*	4.750 [120.65]	*	*	*	4.218 [107.14]	09Z	16N	*
HLT-80	1.313 [33.34]	4.000 [101.60]	1.125 [28.58]	0.750 [19.05]	0.219 [5.56]	2.812 [71.42]	07Z	15N	103, 205, 303
HLT-95	*	6.000 [152.40]	*	*	*	5.468 [138.89]	09Z	16N	*
HLT-100	0.906 [23.02]	6.500 [165.10]	0.750 [19.05]	0.500 [12.70]	0.125 [3.18]	5.750 [146.05]	06Z	15N	102, 206, 303
HLT-120	1.313 [33.34]	6.000 [152.40]	1.125 [28.58]	0.750 [19.05]	0.219 [5.56]	4.812 [122.23]	07Z	15N	103, 205, 303
HLT-130	1.313 [33.34]	6.500 [165.10]	1.125 [28.58]	0.750 [19.05]	0.219 [5.56]	5.312 [134.93]	07Z	15N	103, 205, 303
HLT-160	1.313 [33.34]	8.000 [203.2]	1.125 [28.58]	0.750 [19.05]	0.219 [5.56]	6.812 [173.03]	07Z	15N	103, 205, 303
HLT-175	1.313 [33.34]	8.500 [215.90]	1.125 [28.58]	0.750 [19.05]	0.219 [5.56]	7.312 [185.73]	07Z	15N	103, 205, 303
HLT-225	1.313 [33.34]	10.500 [266.70]	1.125 [28.58]	0.750 [19.05]	0.219 [5.56]	9.312 [236.53]	07Z	15N	103, 205, 303

TERMINAL DIMENSIONS


DIMENSION	TERMINAL TYPE						
	02	06	07	09	14	15	16
A	0.188 [4.76]	0.250 [6.35]	0.375 [9.53]	0.188 [4.76]	0.188 [4.76]	0.250 [6.35]	0.188 [4.76]
B	0.406 [10.32]	0.563 [14.29]	0.625 [15.88]	0.500 [12.70]	0.563 [14.29]	0.594 [15.08]	0.563 [14.29]
C	0.093 [2.36]	0.166 [4.22]	0.173 [4.39]	0.104 [2.64]	0.050 [1.27]	0.065 [1.65]	0.050 [1.27]
D	0.020 [0.51]	0.020 [0.51]	0.020 [0.51]	0.020 [0.51]	0.020 [0.51]	0.031 [0.79]	0.020 [0.51]

MOUNTING HARDWARE

HLT type resistors use same mounting hardware as standard HL type resistor, see HL data sheet for mounting hardware dimensions.

MATERIAL SPECIFICATIONS
Element: Copper-nickel alloy or nickel-chrome alloy, depending on resistance value

Core: Ceramic, steatite

Coating: Special high temperature silicone

Standard Terminals: Model "Z" terminals are tinned steel

Terminal Bands: Steel

Part Marking: DALE, Model, Wattage, Value, Tolerance, Date Code

TERMINAL FINISH

Finish for terminal styles 14, 15 & 16 is limited to nickel plated steel (N), all other terminals will be steel supplied with tinned solder finish (Z).

